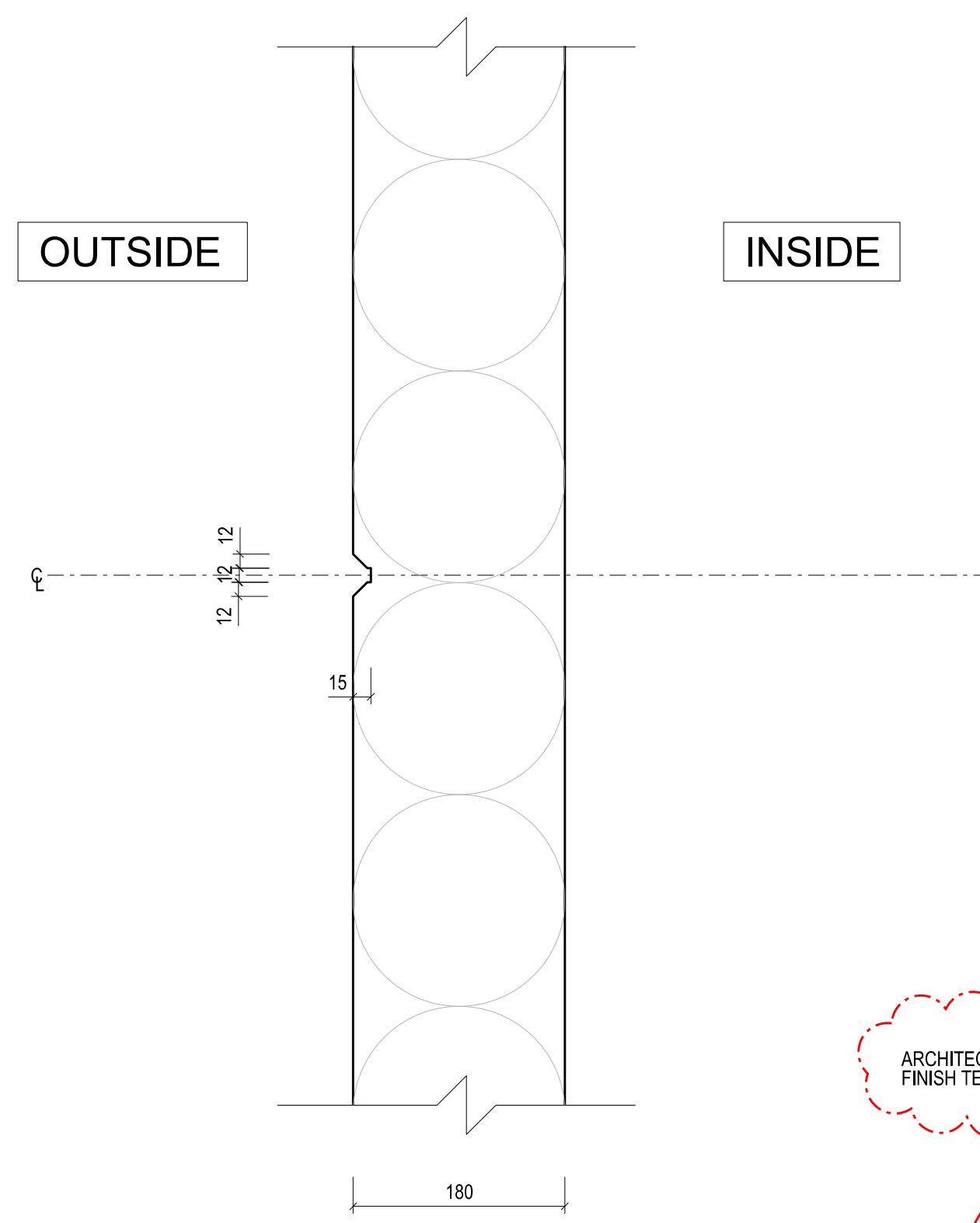
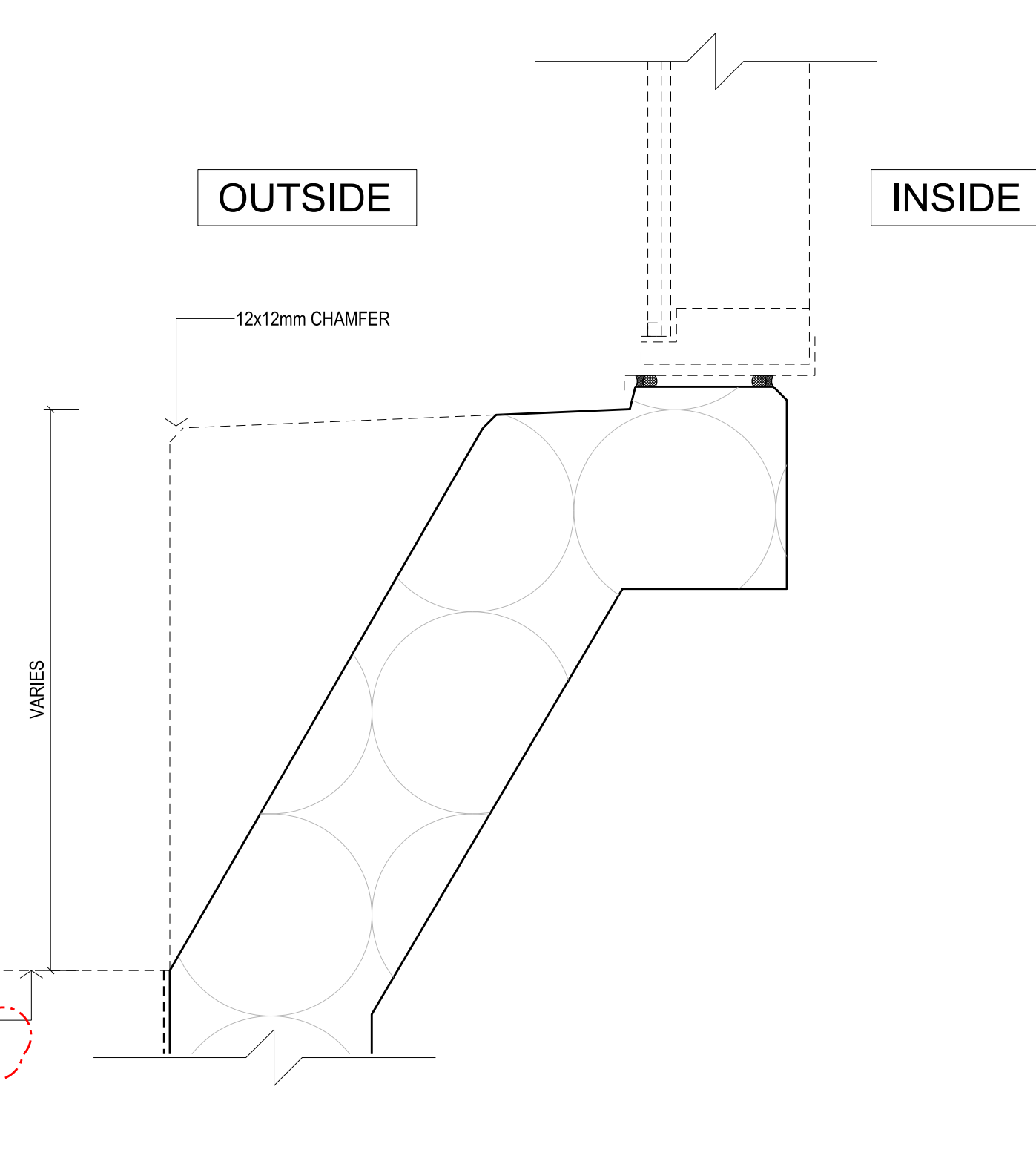


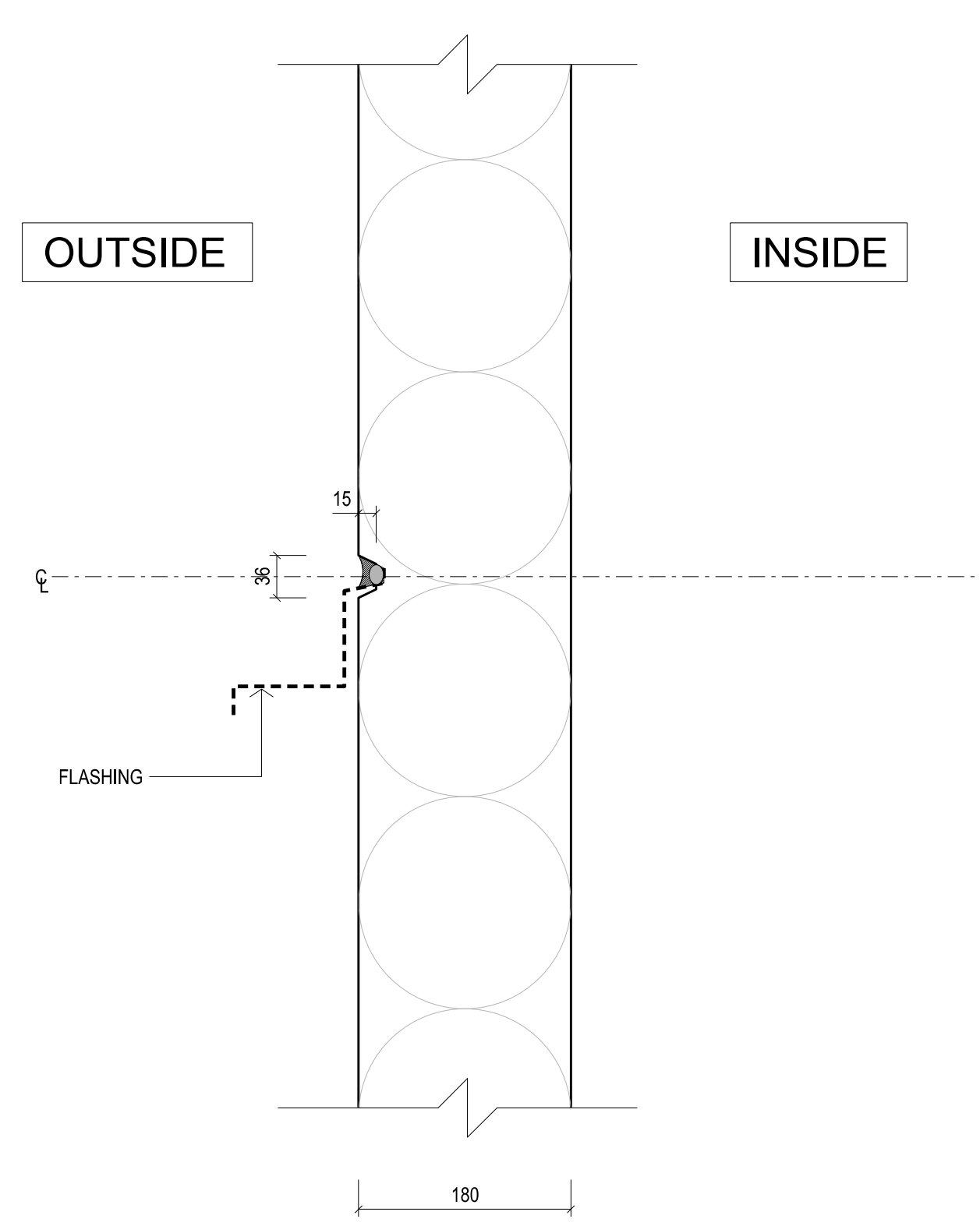
01 SECTION DETAIL
TYPICAL HORIZONTAL JOINT
SCALE 1:5



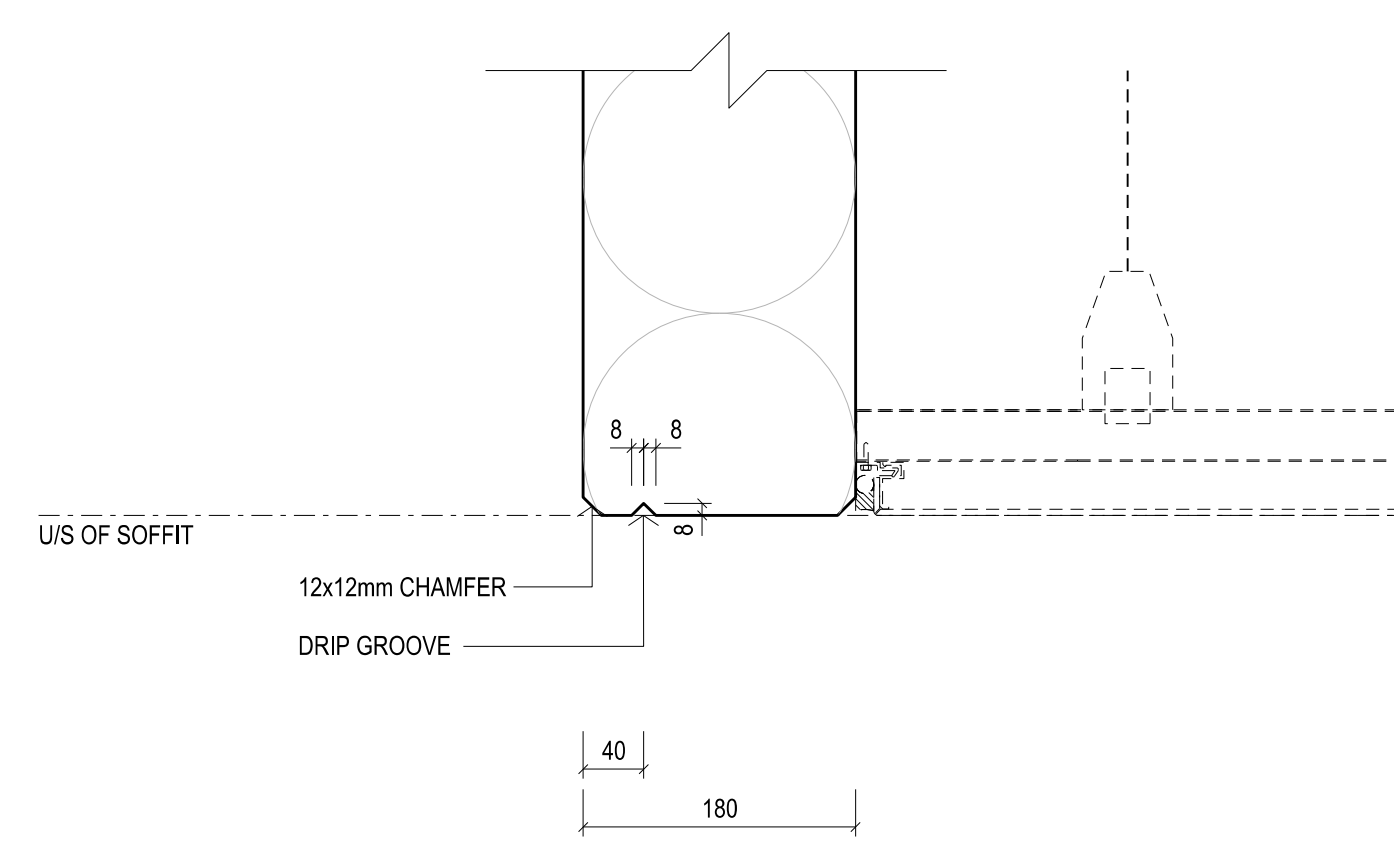
02 SECTION DETAIL
TYPICAL HORIZONTAL FALSE JOINT
SCALE 1:5



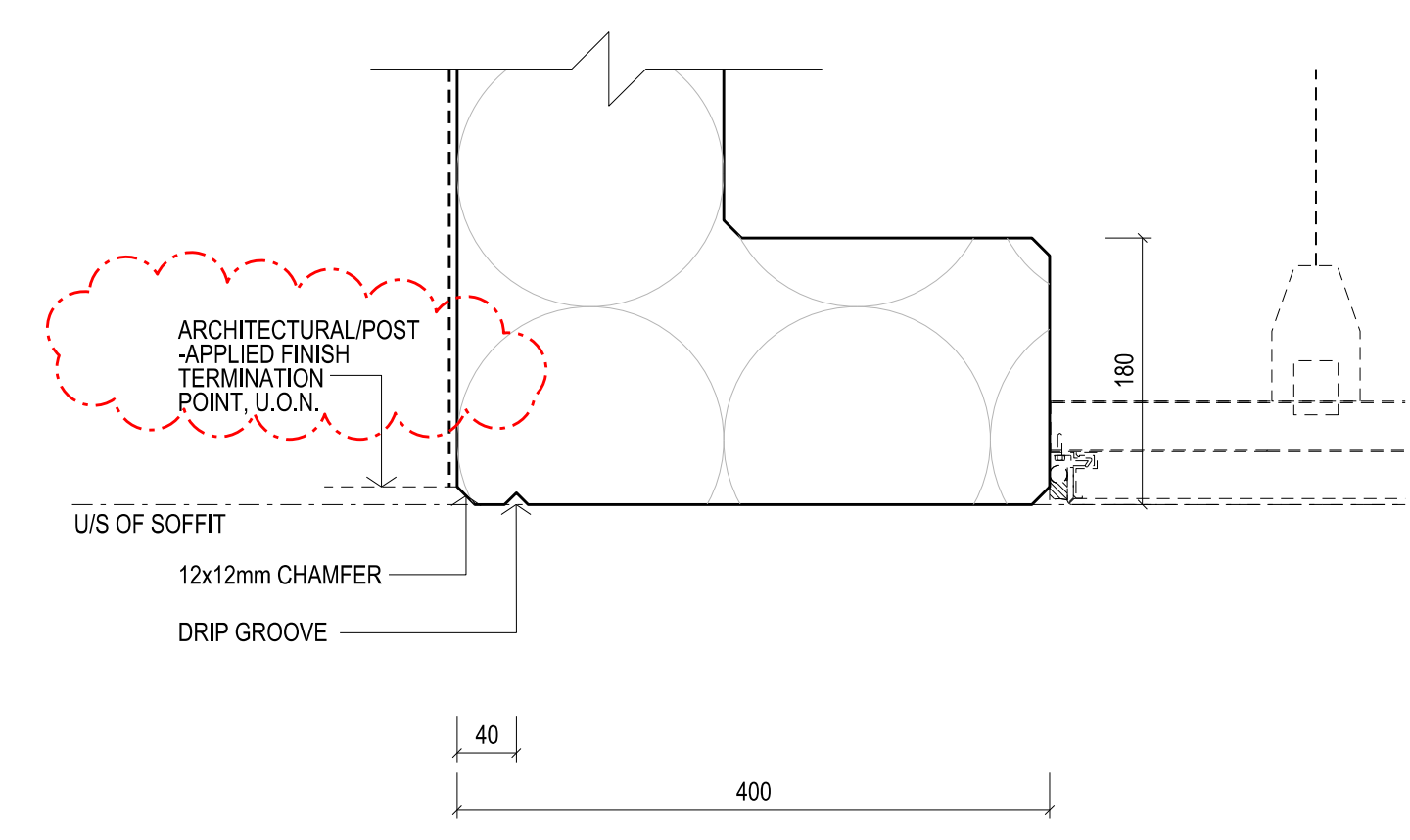
03 SECTION DETAIL
NON HORIZONTAL FOLD PROFILE
SCALE 1:5



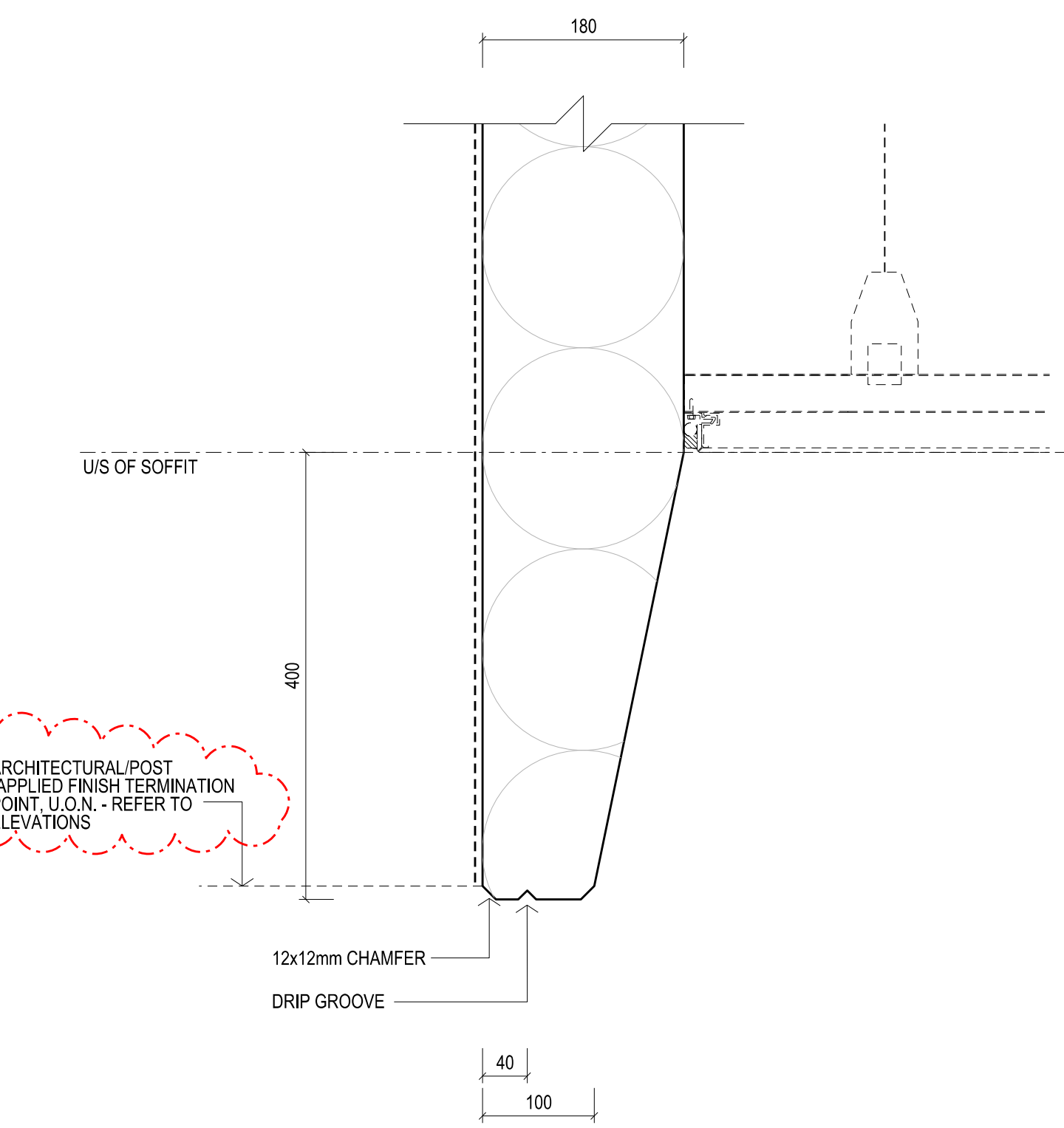
04 SECTION DETAIL
REBATE FOR SHEET METAL FLASHING
SCALE 1:5



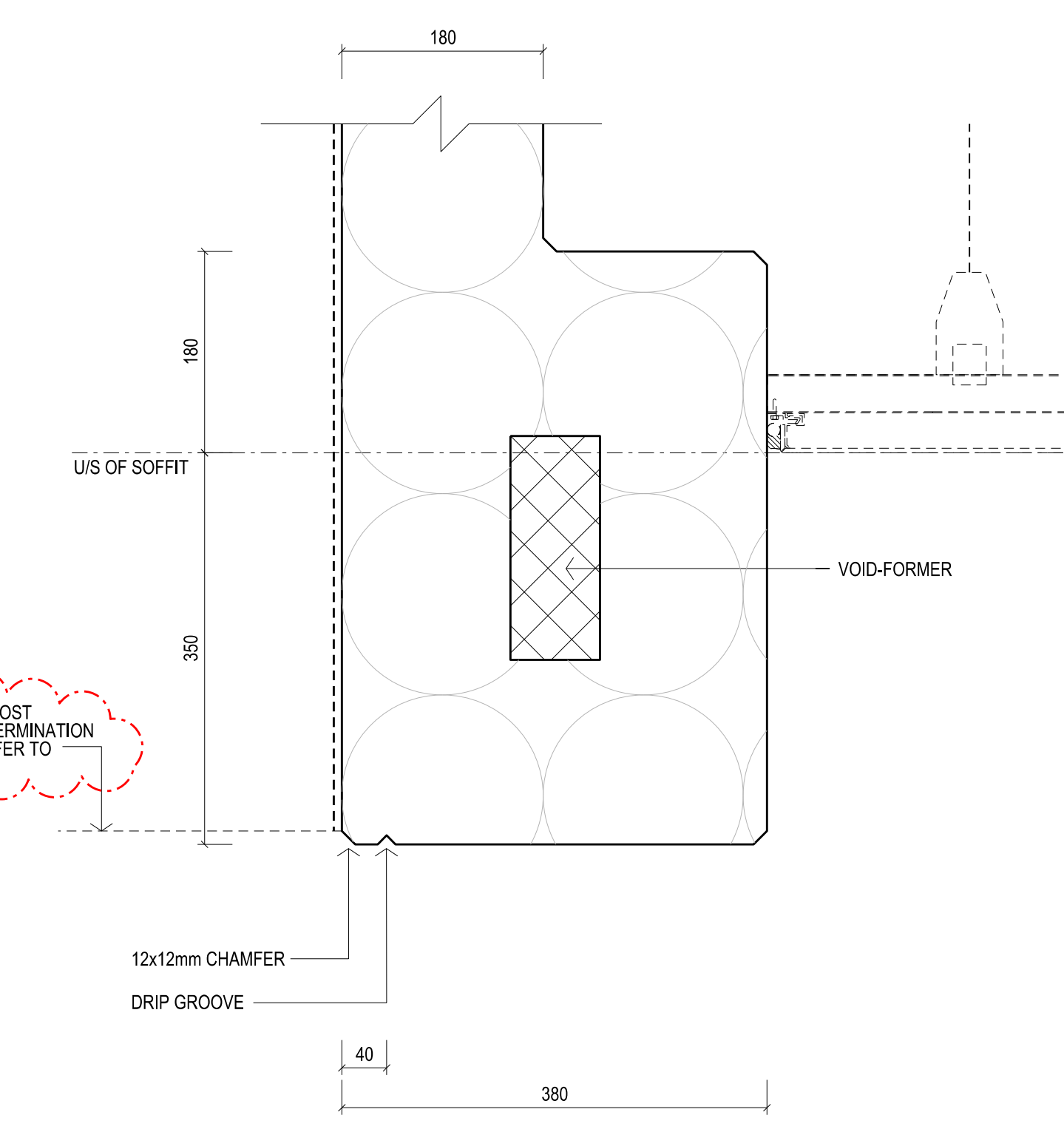
05 SECTION DETAIL
TYPICAL FLUSH SOFFIT DETAIL
SCALE 1:5



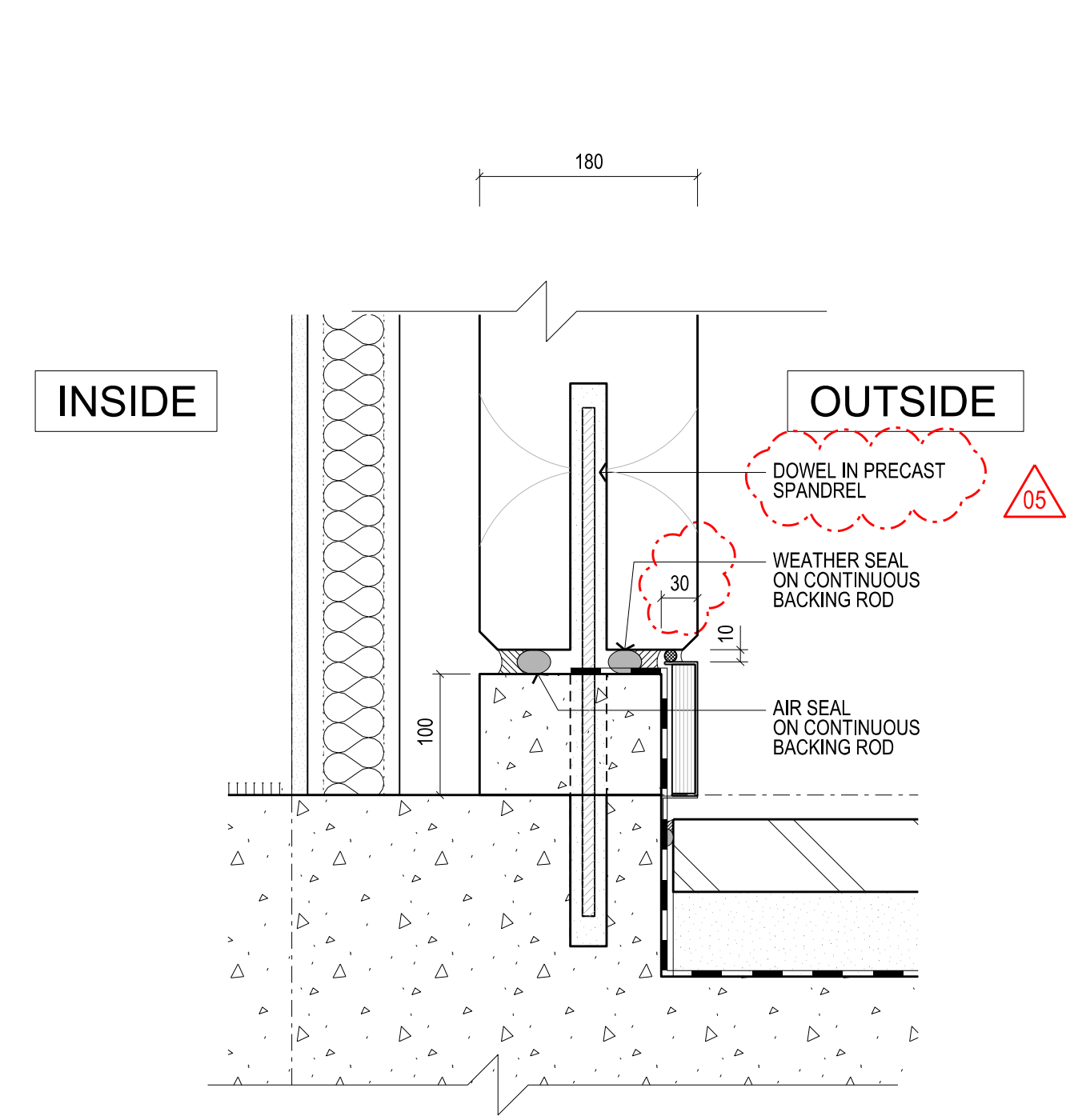
06 SECTION DETAIL
TYPICAL FLUSH SOFFIT DETAIL AT PANEL RETURN
SCALE 1:5



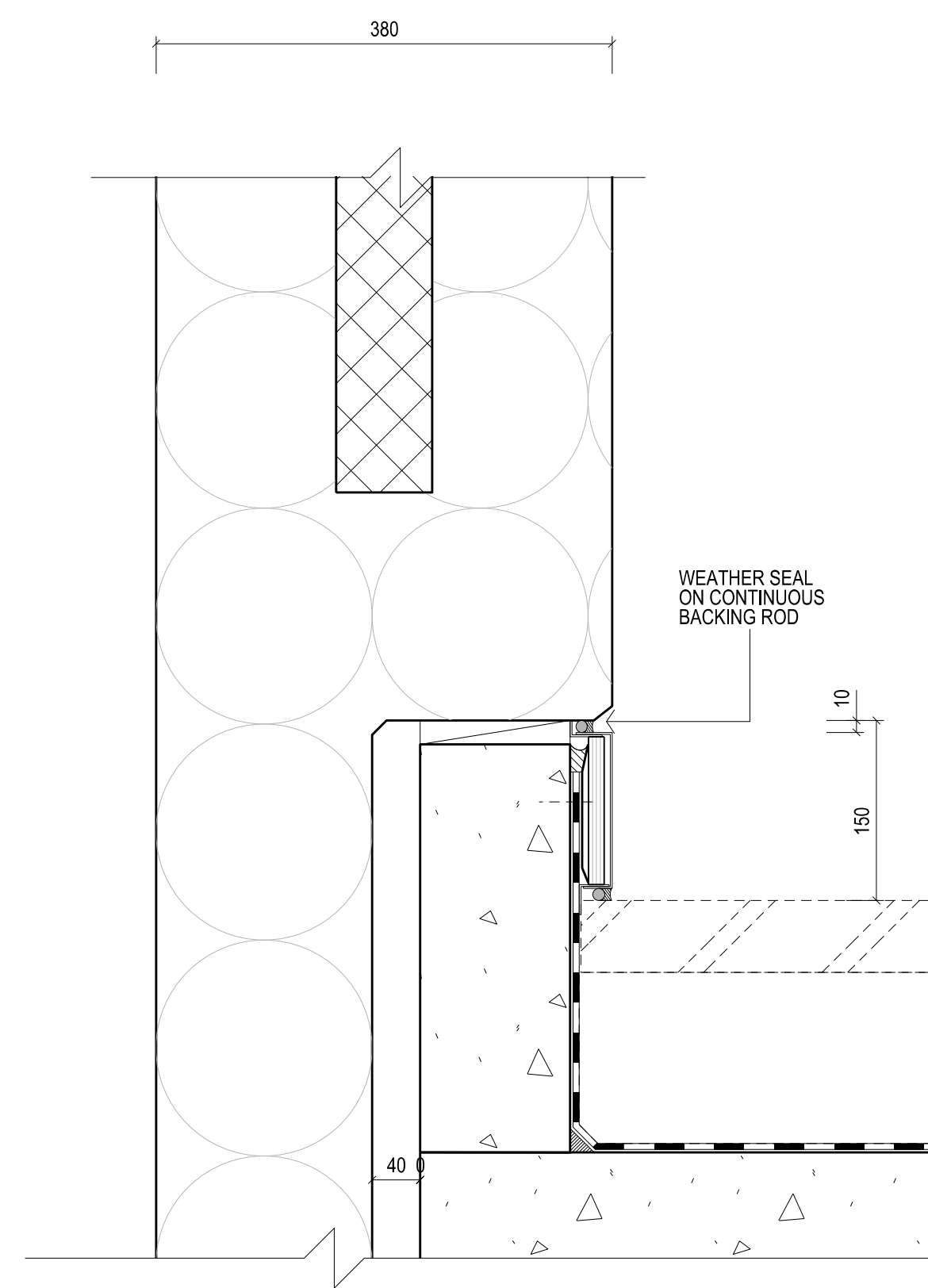
07 SECTION DETAIL
TYPICAL LOWER TAPERING PROFILE
SCALE 1:5



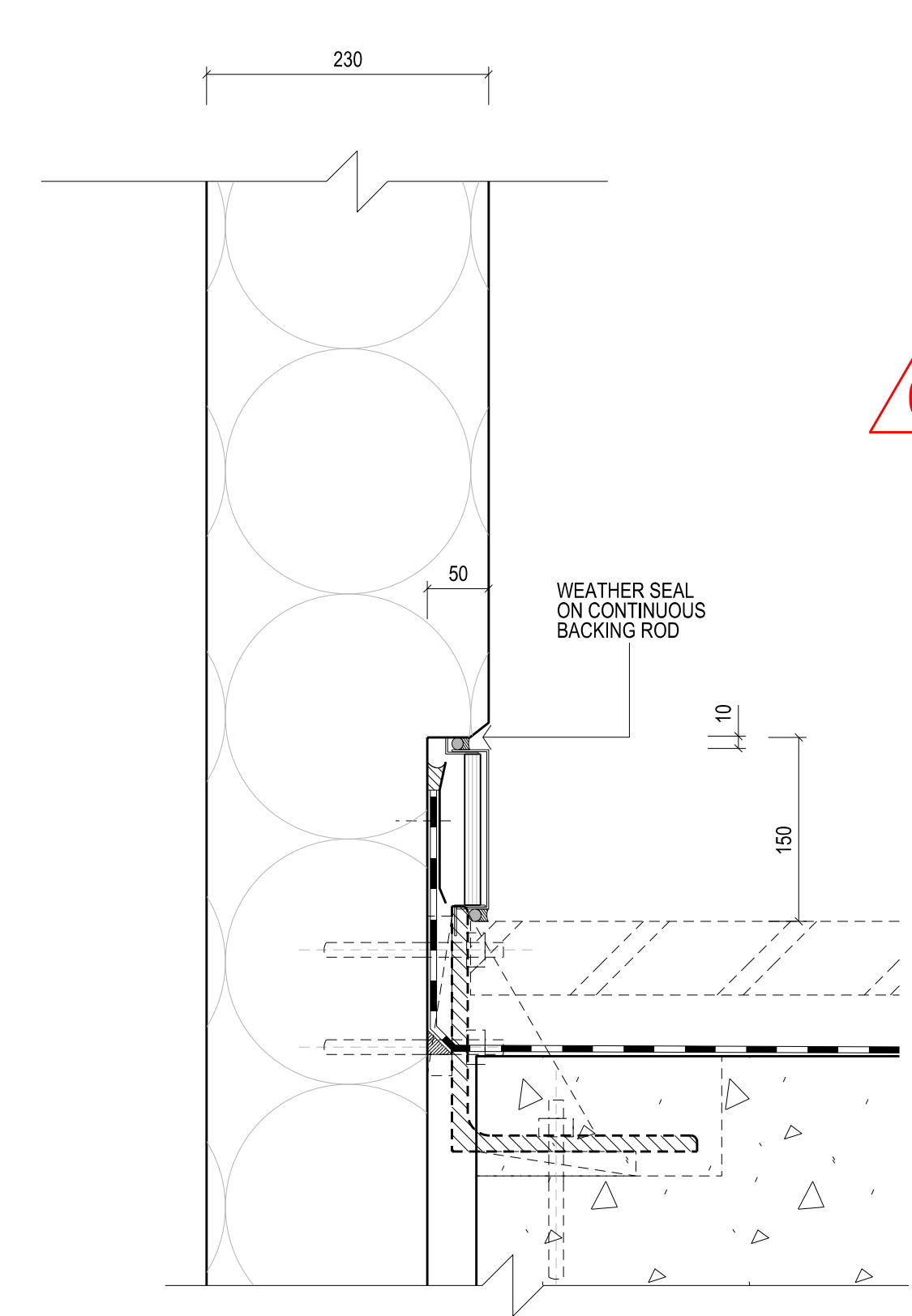
08 SECTION DETAIL
TYPICAL LOWER DOUBLE THICKNESS PROFILE
SCALE 1:5



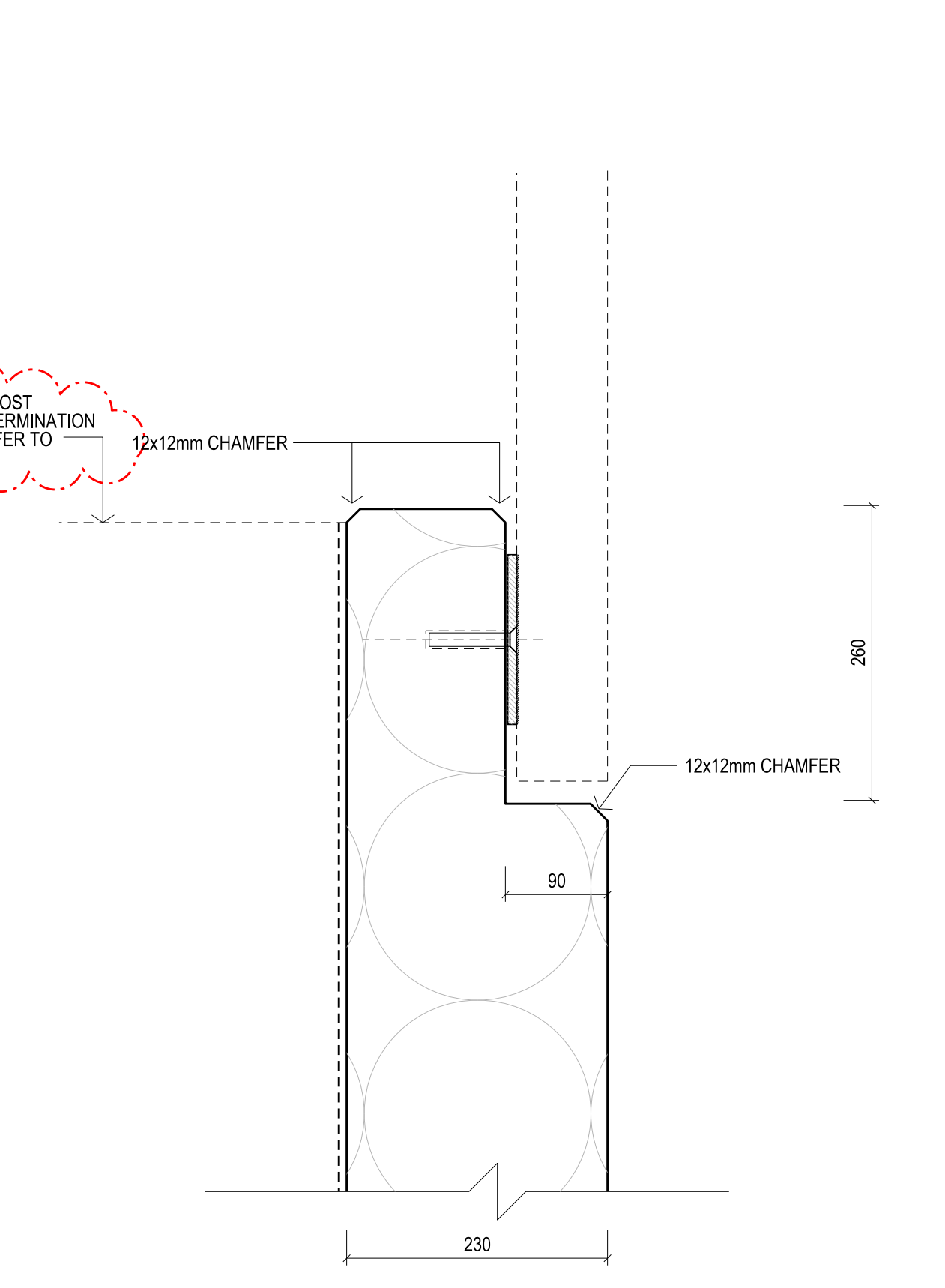
09 SECTION DETAIL
TYPICAL TERRACE BASE DETAIL
SCALE 1:5



10 SECTION DETAIL
PARAPET BASE DETAIL AT DOUBLE THICKNESS PANEL
SCALE 1:5

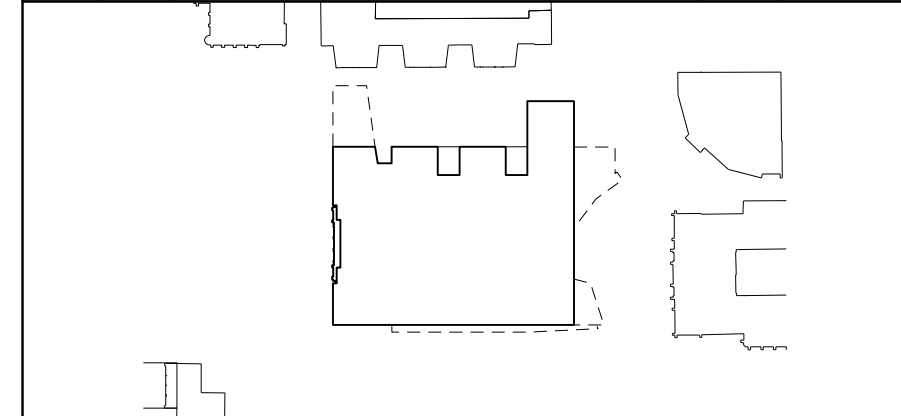


11 SECTION DETAIL
PARAPET BASE DETAIL AT REBATED PANEL
SCALE 1:5



12 SECTION DETAIL
PARAPET BASE DETAIL AT REBATED PANEL
SCALE 1:5

Rev	Issue	Revision Description	And	Date
05	SG	VALUE MANAGEMENT ISSUE	-	28.03.13
04	SG	PRECAST REVIEW	-	21.03.13
03	SG	TENDER ADDENDUM 4	-	08.10.12
02	SG	TENDER ADDENDUM 3	-	02.10.12
01	SG	100% CD - TENDER ISSUE	-	07.09.12



NADAAA

NADAAA
1520 Washington Street No.2 Boston Massachusetts 02118 USA
Telephone +1 617 442 8232 Facsimile +1 688 442 1417 Email nads@nadaaa.com

John Wardle Architects

25 Rokeby Street, Collingwood, Victoria 3066 Australia
Tel: +61 3 8662 0400 www.johnwardlearchitects.com
© 2012 John Wardle Architects ABN 83 006 814 268

Client **University of Melbourne Parkville Campus**

Project **Faculty of Architecture Building and Planning**

Title **TYPICAL PRECAST DETAILS SHEET 2**

Project No.	0913	Scale	1:5 @ A0 1:10 @ A2
Drawing No.	AR 6301	Revision	05

Date Sep 2012 Drawn Co-Ord Check

FILENAME - \$FILES

VM ISSUE